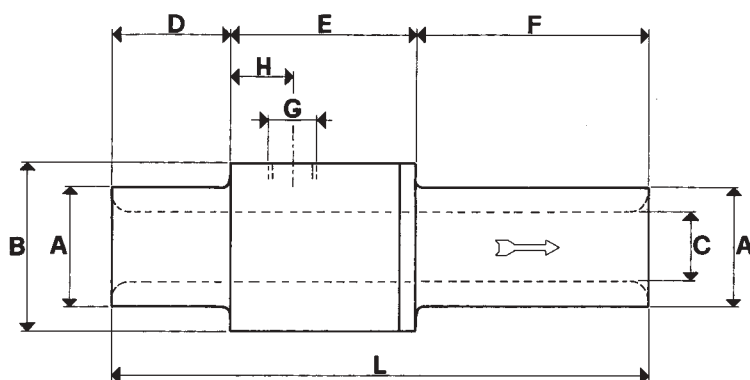




[Flow vacuum generators Vacuum Jet]



OPERATING PRINCIPLE

The feeding compressed air, blown into a ring chamber concentric to the device, flows at a very high speed towards the centre of the main pipe, thus forming a cyclonic effect.

The latter has the property to create a vacuum inside the device and induce a large volume of air towards its exit. Consequently, by changing the feeding air pressure, the depression and the amount of air sucked will also change.

FEATURES

The particular configuration of the flow vacuum generators and their operating principle with straight flow allow to suck and transfer products of different kind, without interferences.

Actually, vacuum jets are suitable for transferring powders, granulated products, sawdust, corn, metal chips, liquid or dry foodstuffs, etc.; or for extracting fumes, refrigerating fogs, water or oil condensates, etc.

The absence of moving parts allows continuous use without heat development.

As no electric current is required, they can also be used in hazardous environments where an ignition source would be dangerous.

They are entirely manufactured in anodized anticorrosive aluminium.

Due to their features, a good filtration of the feeding compressed air is sufficient, in order to avoid any kind of maintenance.

Art.		CX7	CX10	CX13	CX19	CX25	CX38	CX50
Supply pressure	bar (g)	3÷6	3÷6	3÷6	3÷6	3÷6	3÷6	3÷6
Maximum vacuum level	-KPa	10	10	10	10	10	10	5.0
Final pressure	mbar (a)	900	900	900	900	900	900	950
Air consumption	NI/s	0.9÷1.6	1.5÷2.6	4.1÷6.9	6.1÷10	9.4÷16.6	15.2÷27.7	15.2÷27.7
Vacuum air flow	cum/h	15	32	61	115	150	185	250
Working temperature	°C	-20/+80	-20/+80	-20/+80	-20/+80	-20/+80	-20/+80	-20/+80
Weight	Kg	0.110	0.104	0.280	0.500	0.560	0.800	1.090
A	∅	19	19	25	32	38	51	64
B	∅	32	32	45	54	60	75	90
C	∅	7	10	13	19	25	38	50
D		15	15	30	43	42	42	42
E		42	42	55	65	66	66	66
F		33	33	55	82	82	82	82
G	∅ gas	1/8"	1/8"	1/4"	3/8"	3/8"	3/8"	1/2"
H		13	13	18	22	22	22	22
L		90	90	140	190	190	190	190

N.B.: All the vacuum values shown in the table are valid at normal atmospheric pressure of 1013 mbar (a) and obtained with a constant supply pressure.