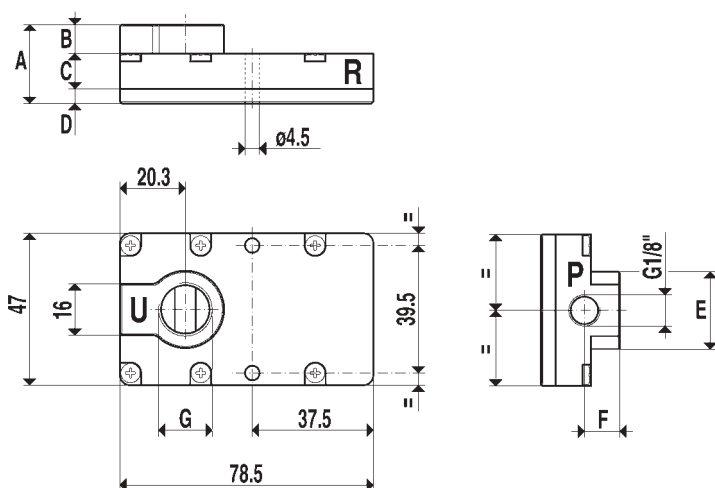




[Vacuum generators M3, M7, M10 and M14]



Comprising of a new multiple ejector design, assembled on compact modules, this range of vacuum generator is distinctive in regards to the high vacuum flow capacity in relation to their small size.

With a compressed air supply of 4 ÷ 6 bar, they are able to produce a maximum depression equal to 85% and a vacuum flow capacity of 3,5 ÷ 14 cum/h, according to the number of the modules they are composed of.

The filter-silencer is integral to the unit.

Manufactured completely in anodized aluminium, they can be installed in any position.

These multiple ejector vacuum generators are suitable for vacuum cup grip systems, particularly in the field of industrial robotics, where devices with a very good working performance, but with very small sizes and weights, are required.

Art.		M3	M7	M10	M14
Supply pressure	bar (g)	6	6	6	6
Maximum vacuum level	-KPa	85	85	85	85
Final pressure	mbar (a)	150	150	150	150
Air consumption at 6 bar	l/s	0.9	1.8	2,4	3.2
Vacuum air flow	cum/h	3.5	7	10.5	14
Working temperature	°C	-10/+80	-10/+80	-10/+80	-10/+80
Weight	Kg	0.109	0.111	0.144	0.145
A		24.5	25.5	34.5	34.5
B		9	10	10	10
C		11	11	20	20
D		4.5	4.5	4.5	4.5
E		20	24	24	24
F		11	12	12	12
G	Ø gas	1/4"	3/8"	3/8"	3/8"

N.B.: All the vacuum values shown in the table are valid at normal atmospheric pressure of 1013 mbar (a) and obtained with a constant supply pressure.