

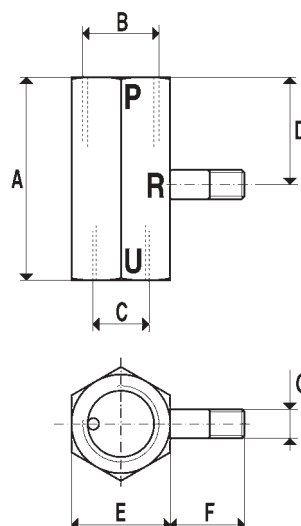
[Vacuum generators in line GV1, GV2 and GV3]



This new range of vacuum generator operates using the Venturi principle.

The feature that distinguishes these from the standard models, are the ports for connection to the supply air and vacuum. These are on the same axis whilst the exhaust port is perpendicular on the body of the unit.

This design offers the advantages of small dimensions, ease of assembly and simple maintenance. They can be assembled directly on the cup supports or holders.



Art.		GV1	GV2	GV3
Vacuum air flow	cum/h	0.9	0.9	0.9
Maximum vacuum level	-KPa	90	90	90
Final pressure	mbar (a)	100	100	100
Supply pressure	bar (g)	4÷5	4÷5	4÷5
Max supply pressure	bar (g)	6	6	6
Air consumption at 5 bar	NI/s	0.4	0.4	0.4
Working temperature	°C	-20/+80	-20/+80	-20/+80
Weight	Kg	0.019	0.020	0.021
A		30	35	38
B	∅	G1/4"	G1/4"	G1/4"
C	∅	M5	G1/8"	G1/4"
D		18.5	18.5	18.5
E	Ch.	17	17	17
F		13	13	13
G	∅	M5	M5	M5

N.B.: All the vacuum values shown in the table are valid at normal atmospheric pressure of 1013 mbar (a) and obtained with a constant supply pressure.