

[Vacuum generators PVP2 and PVP3]

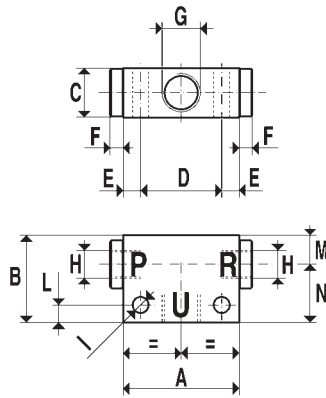


With particularly small dimensions, in relation to their performance, these vacuum generators operate using the Venturi principle.

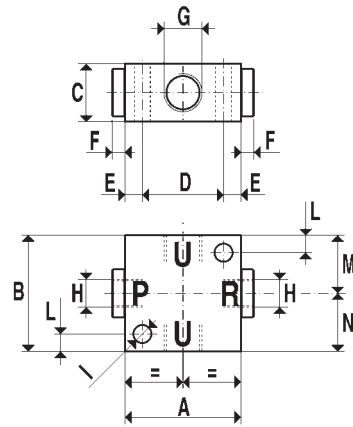
When feeding the generator with compressed air in port P, a depression is produced at connection U and at point R the feeding air with the sucked air is released.

By interrupting to feed P, the vacuum effect in U stops.

The described vacuum generators are generally used for moving by means of cups non-porous objects or on equipment where the capacity and the vacuum degree requirements are very low.



Art. PVP2



Art. PVP3

Art.		PVP 2	PVP 3
Vacuum air flow	cum/h	2	3
Maximum vacuum level	-KPa	85	85
Final pressure	mbar (a)	150	150
Supply pressure	bar (g)	4	4
Max supply pressure	bar (g)	6	6
Air consumption at 4 bar	NI/s	0.9	1.1
Working temperature	°C	-20/+80	-20/+80
Weight	Kg	0.070	0.100
A		40	40
B		30	40
C		17	20
D		28	27
E		6	6.5
F		4.5	4.5
G	∅ gas	1/4"	1/4"
H	∅ gas	1/8"	1/8"
I	∅	5.5	6
L		6	6.5
M		10	20
N		20	20

N.B.: All the vacuum values shown in the table are valid at normal atmospheric pressure of 1013 mbar (a) and obtained with a constant supply pressure.