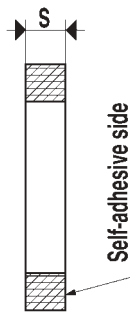
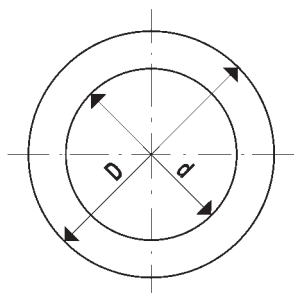




## [Foam rubber cups]

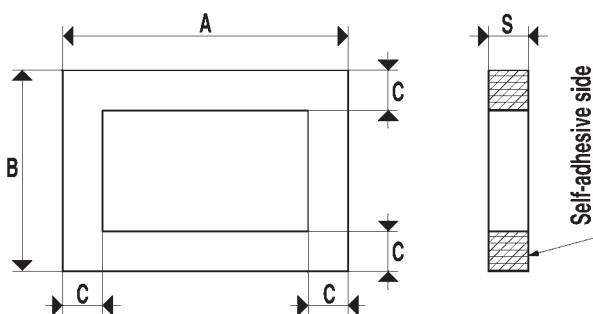


Art.	Force Kg.	D Ø	d Ø	S
01 42 15	0.78	40	20	15
01 64 15	3.5	64	40	15
01 92 15	8.5	92	64	15
01 127 15	17.5	127	92	15
01 180 15	38.5	180	140	15
01 220 15	63.6	220	180	15

The cups shown on this page are made with a special foam rubber compound which has such a density that allows them to grip also on uneven and very rough surfaces and to maintain their elasticity also after many working cycles.

The cups of this series have a self-adhesive side in order to allow a quick fixing to their supports. Foam rubber cups have been designed for handling loads with crude or very rough surfaces (sawn, bushammered or flamed marbles, buckle plates, treadplates or plates with fret, striated plexiglas, raw cement manufactures, garden tiles with grit, etc.) and in all those cases where traditional cups cannot be used.

These cups are produced in circular and rectangular shapes; upon request they can be supplied in different sizes and shapes.



Art.	Force Kg.	A	B	C	S
01 107 75	9	107	75	15	15
01 135 50	6	135	50	15	15
01 135 60	8	135	60	15	15
01 290 68	25	290	68	15	15
01 290 140	72	290	140	15	15