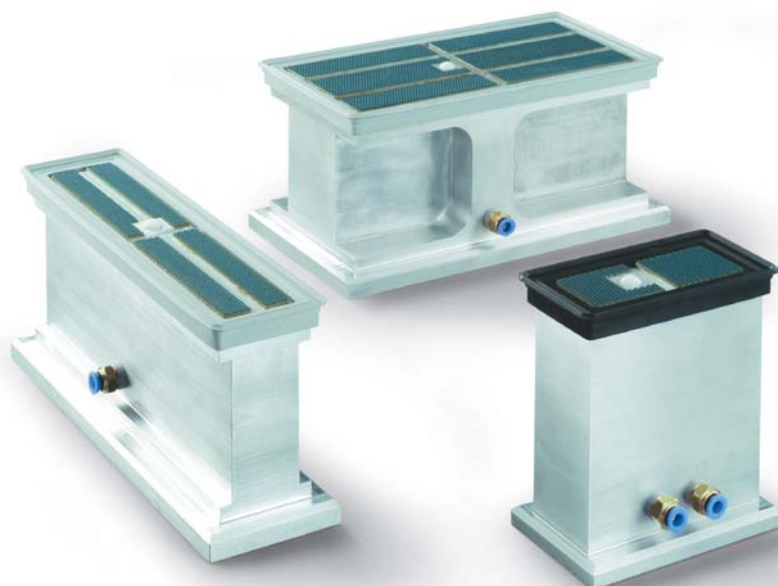


[Cups with ball valve and high self-locking support]



These cups represent a real movable stirrup system too, and they distinguish from the cups previously described for their exceptional height. They consist of:

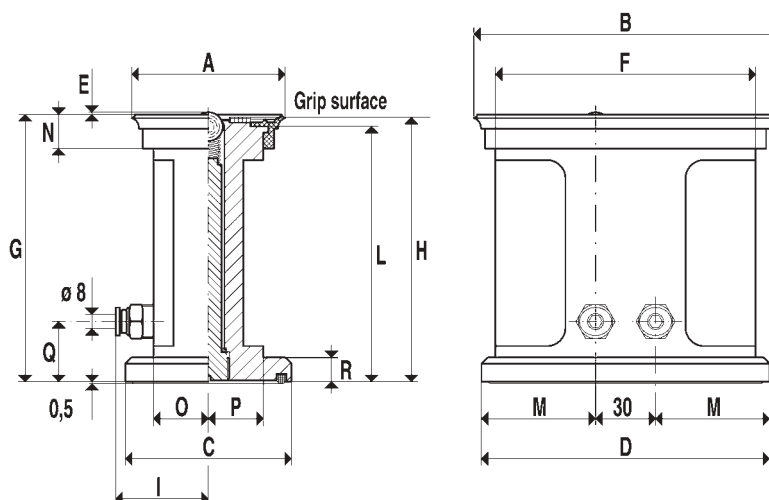
- A sturdy support in anodized aluminium with a wide surface at the base, delimited by a packing which has the purpose to fasten it to the bearing surface.
- A special plastic anti-skid mat, particularly fit for securing of glass and smooth marble, covers the grip surface.
- A standard flat cup, cold assembled on the upper part of the support, for the grip of the load to be clamped.
- A ball valve having the feature to open, and therefore to produce vacuum inside the cup, only when the load to be kept actuates the sealing ball.
- Two rapid fittings for the connection to vacuum.

The vacuum interception for the grip and detachment of the support from the bearing surface and for the grip and the release of the load, can be done by means of vacuum valves or three-way solenoid valves.

All the cups with self-locking support of this series and of the other series have the grip surface situated at the same height and therefore can be used together regardless of their shape or size.

N.B.

With item No. 28, instead of 18, they are available with a support suitable for mechanical fixing.



Art.	Force Kg.	A	B	C	D	E	F	G	H	I	L	M	N	O	P	Q	R
18 120 90/160MT	24.0	90	120	98	128	1	102	162.5	160	51.0	85.5	49.0	17.5	35.0	35.0	30	12
18 150 75/160MT	25.0	75	150	83	144	1	130	162.5	160	43.5	85.5	57.0	16.5	27.5	27.5	30	12
18 300 80/160MT	60.0	80	300	90	310	1	284	162.5	160	47.0	85.5	140	17.5	31.0	31.0	33	15
18 300 150/160MT	113.0	150	300	160	310	1	284	162.5	160	83.0	85.5	140	17.5	67.0	67.0	33	15