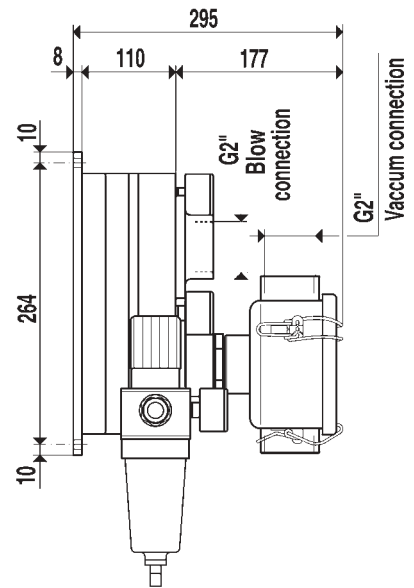
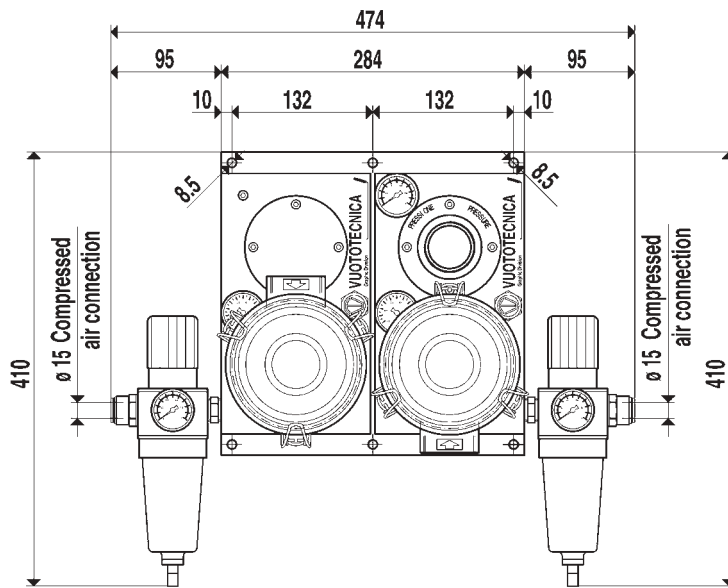




# [Pneumatic suction and blowing pumps combined PA250÷300 with PS250÷300]



Art.	PA 250						Art.	PS 250							
Supply pressure	bar (g)	1	2	3	4	5	6	Supply pressure	bar (g)	1	2	3	4	5	6
Maximum vacuum level	-KPa	15	35	55	70	85	90	Maximum blowing pressure	bar (g)	0.1	0.2	0.3	0.5	0.7	0.8
Air consumption	NI/s	7.5	11.2	15.0	18.0	21.0	24.0	Air consumption	NI/s	7,5	11,2	15,0	18,0	21,0	24,0
Vacuum air flow capacity	cum/h	90	130	170	200	225	250	Blow air capacity	cum/h	117	170	224	265	300	336
Weight	Kg	8.1						Weight	Kg	8.2					
Art.	PA 300						Art.	PS 300							
Supply pressure	bar (g)	1	2	3	4	5	6	Supply pressure	bar (g)	1	2	3	4	5	6
Maximum vacuum level	-KPa	15	35	55	70	85	90	Maximum blowing pressure	bar (g)	0.1	0.2	0.3	0.5	0.7	0.8
Air consumption	NI/s	9.0	13.5	18.0	21.6	25.2	28.8	Air consumption	NI/s	9,0	13,5	18,0	21,6	25,2	28,8
Vacuum air flow capacity	cum/h	100	150	200	225	250	300	Blow air capacity	cum/h	132	198	265	302	340	403
Weight	Kg	8.1						Weight	Kg	8.2					
Working temperature	°C	-20/+80						Working temperature	°C	-20/+80					

N.B.: All the values shown in the table are valid at normal atmospheric pressure of 1013 mbar (a) and obtained with a constant supply pressure.