

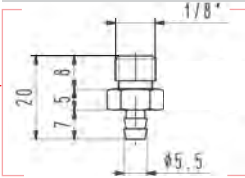
STANDARD FLAT CUPS



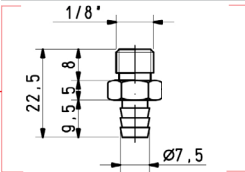
- Designed for handling flat work pieces especially in fast pick and place applications.
- Can be used in light-weight shear plane applications or where the work piece has to be turned through 90°.
- The models listed below can be used with the fittings shown on the right.

Part No.	A	B	C	D	E	G	Fitting Number
01 10 10	11.0	7	4.0	10	8.5	7.0	00 08 03
01 12 10	11.0	8	4.0	12	8.0	9.0	00 08 03
01 15 10	12.0	8	4.0	15	8.0	9.5	00 08 03
01 18 10	12.0	8	4.0	18	8.0	9.5	00 08 03
01 20 10	12.0	8	4.0	20	8.0	9.5	00 08 03
01 22 10	13.0	8	4.0	22	8.0	10.0	00 08 03
01 25 15	16.0	12	6.0	25	10.0	11.5	00 08 05
01 30 15	17.0	12	6.0	30	10.0	12.5	00 08 05
01 35 15	16.0	15	10.0	35	10.0	11.5	00 08 20
01 40 15	18	15	10.0	40	10.0	12.5	00 08 20
01 45 15	23.0	15	10.0	45	10.0	14.5	00 08 20

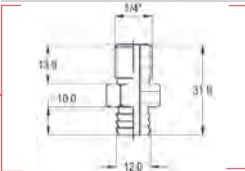
00 08 03 - G18 (BSPP)
00 08 03 - N18 (NPT)



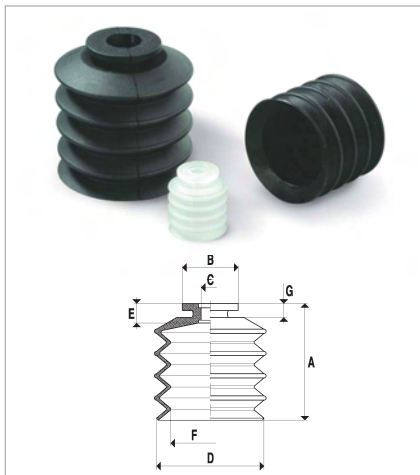
00 08 05 - G18 (BSPP)
00 08 05 - N18 (NPT)



00 08 20 - G14 (BSPP)
00 08 20 - N14 (NPT)



GENERIC BELLOWS CUPS

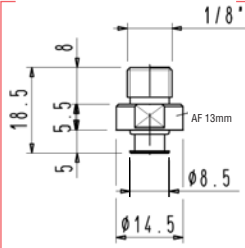


- Very popular for handling food and food packaging and other non-flat products.
- The thin outside lip deforms to mate evenly with rough and unflat surfaces such as plastic packaging, foodstuffs such as bread, cookies, candy and other non uniform shapes.
- The models listed below can be used with the fittings shown on the right.

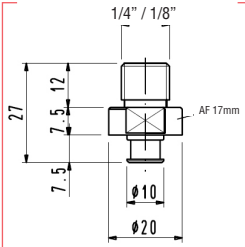
Multiple Bellows

Part No.	A	B	C	D	E	F	G	Fitting Number
01 20 23	23	14.5	5	20	5	14	4	00 08 133
01 30 32	32	20	6.5	30	7	21	5	00 08 135
01 40 42	42	20	6.5	40	7	28	5	00 08 135
01 50 53	35	27	10.5	50	10	35	6	00 08 142

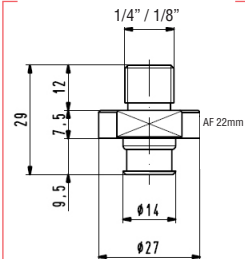
00 08 133 - G18 (BSPP)
00 08 133 - N18 (NPT)



00 08 135 - G18 (BSPP)
00 08 135 - N18 (NPT)
00 08 135 - G14 (BSPP)
00 08 135 - N14 (NPT)



00 08 142 - G18 (BSPP)
00 08 142 - N18 (NPT)
00 08 142 - G14 (BSPP)
00 08 142 - N14 (NPT)



- Single bellows cups are very popular in standard handling applications.
- The bellows design aids the lifting of thin sheets of paper, steel, plastic and other work pieces where the pick up point varies in position.
- When sealed against the pick up surface the bellows concept offers a vertical movement independent of the machine which aids separation of thin sheets and other products as described previously.
- Able to handle concave and convex products.
- The models listed above can be used with the fittings shown on the right.

Single Bellows

Part No.	A	B	C	D	E	F	G	Fitting Number
01 22 19	19	14.5	5	22	5.5	11	4	00 08 133
01 34 26	26	14.5	5	34	5.5	17	4	00 08 133
01 43 28	28	20	6.5	43	7	21.5	4	00 08 135
01 53 35	35	27	10.5	53	9.5	30.5	6	00 08 142

For level compensators and other accessories, refer to www.vuototecnica.us



Vacuum Cup Materials

The part numbers shown in this catalogue indicate the cup only. To specify the material of the cup the following suffixes should be used.

A - Nitrile Rubber N - Natural Rubber S - Silicone Rubber V - Viton Rubber B - Benz
(please refer to material data table on page 1)
Example: 01 18 10A (Nitrile rubber compound)

